

# FL SWITCH 1016N - Industrial Ethernet Switch



1085255

<https://www.phoenixcontact.com/us/products/1085255>

Please be informed that the data shown in this PDF document is generated from our online catalog. Please find the complete data in the user documentation. Our general terms of use for downloads are valid.



Narrow Ethernet switch, sixteen RJ45 ports with 10/100 Mbps on all ports, automatic data transmission speed detection, autocrossing function, and QoS

## Your advantages

- QoS-prioritized (Quality of Service) messages
- RJ45 ports support a transmission speed of 10/100 Mbps
- Local diagnostic indicators with LEDs
- PROFINET PTCP filter for reliable communication on PROFINET networks
- Enhanced traffic prioritization for automation protocols
- Energy-efficient Ethernet in accord. with IEEE 802.3az
- PROFINET Conformance Class A for real-time data exchange
- Auto negotiation and autocrossing detection simplifies installation and setup

## Commercial data

Item number	1085255
Packing unit	1 pc
Sales key	DN20
Product key	DNN116
GTIN	4055626835037
Weight per piece (including packing)	350 g
Weight per piece (excluding packing)	266 g
Country of origin	TW

# FL SWITCH 1016N - Industrial Ethernet Switch



1085255

<https://www.phoenixcontact.com/us/products/1085255>

## Technical data

### Dimensions

Width	40 mm
Height	140.4 mm
Depth	92.4 mm

### Notes

#### Utilization restriction

EMC note	EMC: class A product, see manufacturer's declaration in the download area
----------	---

### Material specifications

Housing material	Polycarbonate fiber reinforced
------------------	--------------------------------

### Mounting

Mounting type	DIN rail mounting
---------------	-------------------

### Interfaces

#### Ethernet (RJ45)

Number of interfaces	16
Connection method	RJ45
Note on the connection method	Auto negotiation and autocrossing
Transmission speed	10/100 Mbps
Transmission physics	Ethernet in RJ45 twisted pair
Transmission length	100 m (per segment)
Signal LEDs	Data receive, link status
No. of channels	16 (RJ45 ports)

### Product properties

Product type	Switch
Product family	Unmanaged Switch 1000
MTTF	63.7 Years (MIL-HDBK-217F standard, temperature 25°C, operating cycle 100%)
	729 Years (SN 29500 standard, temperature 25°C, operating cycle 21%)
	639 Years (Telcordia standard, 25°C temperature, 21% operating cycle (5 days a week, 8 hours a day))

#### Switch functions

Basic functions	Unmanaged switch
	Autonegotiation
	Store and Forward switching mode
PROFINET conformance class	Conformance-Class A

# FL SWITCH 1016N - Industrial Ethernet Switch



1085255

<https://www.phoenixcontact.com/us/products/1085255>

MAC address table	8k
Status and diagnostic indicators	LEDs: U <sub>S</sub> , link and activity per port
Additional functions	100 BASE-TX/100BASE-FX (IEEE 802.3u)
	Quality of Service (QoS) prioritization (IEEE 802.1p)
	Energy-efficient Ethernet (IEEE 802.3az)
	10Base-T (IEEE 802.3)

## Security functions

Basic functions	Unmanaged switch
	Autonegotiation
	Store and Forward switching mode

## Electrical properties

Maximum power dissipation for nominal condition	6.384 W
Transmission medium	Copper

## Supply

Supply voltage (DC)	24 V
Supply voltage (AC)	24 V AC (50/60 Hz)
Supply voltage range	9 V DC ... 32 V DC
	18 V AC ... 30 V AC (50/60 Hz)
Power supply connection	Via COMBICON, max. conductor cross section 2.5 mm <sup>2</sup>
Residual ripple	3.6 V <sub>PP</sub> (within the permitted voltage range)
Max. current consumption	266 mA (at 9 V DC)
Typical current consumption	68 mA (at 24 V DC)

## Connection data

### Connection technology

Connection name	Power supply
pluggable	yes

### Power supply

Connection method	Push-in spring connection
Conductor cross section, rigid	0.2 mm <sup>2</sup> ... 2.5 mm <sup>2</sup>
Conductor cross section, flexible	0.2 mm <sup>2</sup> ... 2.5 mm <sup>2</sup>
Conductor cross section AWG	24 ... 12
Conductor cross section, flexible, with ferrule, with plastic sleeve	0.25 mm <sup>2</sup> ... 2.5 mm <sup>2</sup>
Conductor cross section flexible, with ferrule without plastic sleeve	0.25 mm <sup>2</sup> ... 2.5 mm <sup>2</sup>
Stripping length	10 mm

## Environmental and real-life conditions

### Ambient conditions

Degree of protection	IP30
Ambient temperature (operation)	-10 °C ... 60 °C

# FL SWITCH 1016N - Industrial Ethernet Switch



1085255

<https://www.phoenixcontact.com/us/products/1085255>

Ambient temperature (storage/transport)	-40 °C ... 85 °C
Altitude	2000 m (maximum)
Permissible humidity (operation)	5 % ... 95 % (non-condensing)
Permissible humidity (storage/transport)	5 % ... 95 % (non-condensing)
Shock (operation)	30g (EN 60068-2-27)
Vibration (operation)	in acc. with IEC 60068-2-6: 5g, 150 Hz
Air pressure (operation)	79 kPa ... 108 kPa up to 2000 m above mean sea level (Without derating)
Air pressure (storage/transport)	79 kPa ... 108 kPa up to 2000 m above mean sea level (Without derating)

## Approvals

### Conformity/Approvals

Conformance	CE-compliant
UL, USA / Canada	UL 61010-1, UL 61010-2-201 Class I, Div. 2, Groups A, B, C, D, T4 Class I, Zone 2, Group IIC, T4

## EMC data

Conformance with EMC directives	EN 61000-6-2 EN 61000-4-2 (ESD) Criterion B
	EN 61000-6-2 EN 61000-4-3 (electromagnetic fields) Criterion A
	EN 61000-6-2 EN 61000-4-4 (EFT burst) Criterion A
	EN 61000-6-2 EN 61000-4-5 (surge) Criterion B
	EN 61000-6-2 EN 61000-4-6 (line noise immunity) Criterion A
	EN 61000-6-2 EN 61000-4-8 (electromagnetic fields) Criterion A
	EN 61000-6-2 Class A
Noise immunity	EN 61000-6-2:2005
Electromagnetic compatibility	Conformance with EMC Directive 2014/30/EU
Noise emission	EN 61000-6-4:2007 + A1:2011

## System properties

### Functionality

Basic functions	Unmanaged switch
	Autonegotiation
	Store and Forward switching mode

## Signaling

Status display	LEDs: U <sub>S</sub> , link and activity per port
----------------	---

# FL SWITCH 1016N - Industrial Ethernet Switch



1085255

<https://www.phoenixcontact.com/us/products/1085255>

## Approvals

To download certificates, visit the product detail page: <https://www.phoenixcontact.com/us/products/1085255>



### IECEE CB Scheme

Approval ID: DK-91138-UL



### EAC

Approval ID: RU \*-DE.A\*08.B.00731



### IECEE CB Scheme

Approval ID: DK-91246-UL



### UL Listed

Approval ID: FILE E 140403



### cUL Listed

Approval ID: FILE E 140403



### KC

Approval ID: R-R-PCK-1085255



### cUL Listed

Approval ID: FILE E 238705



### UL Listed

Approval ID: FILE E 238705



### CC-Link IE Field

Approval ID: NRT-IT-00068

### UAE-RoHS

Approval ID: 23-09-84493



### cUL Listed

Approval ID: FILE E 196811

# FL SWITCH 1016N - Industrial Ethernet Switch



1085255

<https://www.phoenixcontact.com/us/products/1085255>



**UL Listed**

Approval ID: FILE E 196811

**cULus Listed**

# FL SWITCH 1016N - Industrial Ethernet Switch



1085255

<https://www.phoenixcontact.com/us/products/1085255>

## Classifications

### ECLASS

ECLASS-11.0	19170402
ECLASS-13.0	19170402

### ETIM

ETIM 8.0	EC000734
----------	----------

### UNSPSC

UNSPSC 21.0	43222600
-------------	----------

# FL SWITCH 1016N - Industrial Ethernet Switch

1085255

<https://www.phoenixcontact.com/us/products/1085255>



## Environmental product compliance

REACH SVHC	Lead 7439-92-1
------------	----------------



1085255

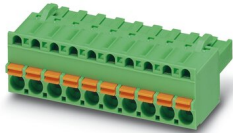
<https://www.phoenixcontact.com/us/products/1085255>

## Accessories

### FKCT 2,5/ 3-ST KMGY BD:US,GND - PCB connector

1087544

<https://www.phoenixcontact.com/us/products/1087544>

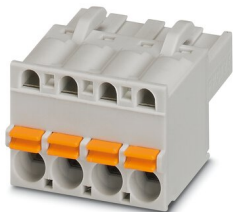


PCB connector, nominal cross section: 2.5 mm<sup>2</sup>, color: light grey, nominal current: 12 A, rated voltage (III/2): 320 V, contact surface: Tin, contact connection type: Socket, number of rows: 1, number of positions: 3, product range: FKCT 2,5/..-ST, pitch: 5 mm, connection method: Push-in spring connection, conductor/PCB connection direction: 0 °, locking clip: - Locking clip, plug-in system: COMBICON MSTB 2,5, locking: without, mounting: without, type of packaging: packed in cardboard

### FKCT 2,5/ 3-ST KMGY - PCB connector

1998263

<https://www.phoenixcontact.com/us/products/1998263>



PCB connector, nominal cross section: 2.5 mm<sup>2</sup>, color: light grey, nominal current: 12 A, rated voltage (III/2): 320 V, contact surface: Tin, contact connection type: Socket, number of potentials: 3, number of rows: 1, number of positions: 3, number of connections: 3, product range: FKCT 2,5/..-ST, pitch: 5 mm, connection method: Push-in spring connection, conductor/PCB connection direction: 0 °, locking clip: - Locking clip, plug-in system: COMBICON MSTB 2,5, locking: without, mounting: without, type of packaging: packed in cardboard

# FL SWITCH 1016N - Industrial Ethernet Switch



1085255

<https://www.phoenixcontact.com/us/products/1085255>

## FL PANEL ADAPTER 40 - Mounting panel

1085486

<https://www.phoenixcontact.com/us/products/1085486>



The FL PANEL ADAPTER 40 is designed to allow products 40 mm wide to be mounted flush to a panel, in any orientation.

---

## FL DIN-RAIL ADAPTER 40 - Mounting panel

1085484

<https://www.phoenixcontact.com/us/products/1085484>



The FL DIN-RAIL ADAPTER 40 is designed to allow products 40 mm wide to be mounted flush to a standard 35 mm DIN rail, in any orientation.

# FL SWITCH 1016N - Industrial Ethernet Switch



1085255

<https://www.phoenixcontact.com/us/products/1085255>

## DT-LAN-CAT.6+ - Surge protection device

2881007

<https://www.phoenixcontact.com/us/products/2881007>



Surge protection in accordance with Class E<sub>A</sub> (CAT6<sub>A</sub>), for Gigabit Ethernet (up to 10 Gbps), token ring, FDDI/CDDI, ISDN, and DS1. Suitable for Power over Ethernet (PoE++ / 4PPoE) "Mode A" and "Mode B". RJ45 attachment plug with separate grounding cable and ground connection snap-on foot for NS 35 DIN rails.

---

## FL CAT5 PATCH 0,5 - Patch cable

2832263

<https://www.phoenixcontact.com/us/products/2832263>



Patch cable, CAT5, assembled, 0.5 m

# FL SWITCH 1016N - Industrial Ethernet Switch



1085255

<https://www.phoenixcontact.com/us/products/1085255>

## FL CAT5 PATCH 1,0 - Patch cable

2832276

<https://www.phoenixcontact.com/us/products/2832276>



Patch cable, CAT5, assembled, 1 m

---

## FL CAT5 PATCH 2,0 - Patch cable

2832289

<https://www.phoenixcontact.com/us/products/2832289>



Patch cable, CAT5, assembled, 2 m

# FL SWITCH 1016N - Industrial Ethernet Switch



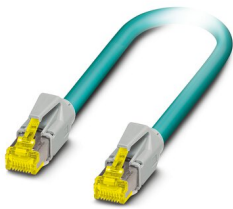
1085255

<https://www.phoenixcontact.com/us/products/1085255>

## NBC-R4AC-R4AC-IE8A/.../... - Patch cable

1411854

<https://www.phoenixcontact.com/us/products/1411854>



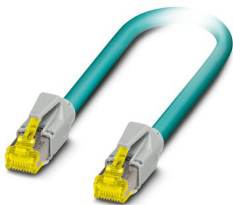
Patch cable, degree of protection: IP20, number of positions: 8, 10 Gbps, CAT6<sub>A</sub>, cable outlet: straight, Ethernet

---

## NBC-R4AC/10G-R4AC/10G-94F/2,0 - Patch cable

1408360

<https://www.phoenixcontact.com/us/products/1408360>



Patch cable, CAT6<sub>A</sub>, 4-pair, shielded, connection not crossed (line), assembled at both ends with RJ45/IP20 connectors, outer sheath material: PUR, length: 2.0 m

# FL SWITCH 1016N - Industrial Ethernet Switch



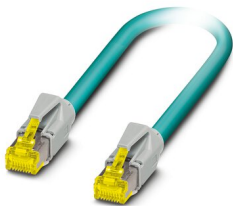
1085255

<https://www.phoenixcontact.com/us/products/1085255>

## NBC-R4AC/10G-R4AC/10G-94F/3,0 - Patch cable

1408365

<https://www.phoenixcontact.com/us/products/1408365>



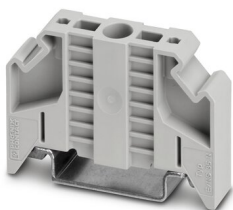
Patch cable, CAT6<sub>A</sub>, 4-pair, shielded, connection not crossed (line), assembled at both ends with RJ45/IP20 connectors, outer sheath material: PUR, length: 3.0 m

---

## E/NS 35 N - End clamp

0800886

<https://www.phoenixcontact.com/us/products/0800886>



End clamp, width: 9.5 mm, color: gray

# FL SWITCH 1016N - Industrial Ethernet Switch

1085255

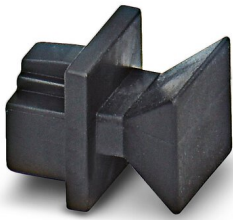
<https://www.phoenixcontact.com/us/products/1085255>



## FL RJ45 PROTECT CAP - Dust protection

2832991

<https://www.phoenixcontact.com/us/products/2832991>



Dust protection caps for RJ45 socket

---

Phoenix Contact 2023 © - all rights reserved

<https://www.phoenixcontact.com>

Phoenix Contact USA  
586 Fulling Mill Road  
Middletown, PA 17057, United States  
(+717) 944-1300  
[info@phoenixcon.com](mailto:info@phoenixcon.com)