

2989624

<https://www.phoenixcontact.com/us/products/2989624>

Please be informed that the data shown in this PDF document is generated from our online catalog. Please find the complete data in the user documentation. Our general terms of use for downloads are valid.



Ethernet Lean Managed Switch with four 10/100 Mbps RJ45 ports and one 100 Mbps FX-SC multi-mode port

Product description

The compact Lean Managed Switches (LM) enable the flexible and cost-effective creation of managed Ethernet networks in automation applications. Thanks to the wide range of connection versions and the extended temperature range of -40°C to +70°C, it optimally meets the requirements of industrial applications. It supports PROFINET conformance class A. And its integrated software enables the redundant creation, diagnostics, and monitoring of networks using IT standard protocols.

Your advantages

- Ambient temperature -40 °C ... 70 °C
- Configurable alarm contact
- Web-based management, SNMP
- Configuration can be stored externally
- Comprehensive fiber optic versions
- Compact housing

Commercial data

Item number	2989624
Packing unit	1 pc
Note	Made to order (non-returnable)
Sales key	DN17
Product key	DNN121
Catalog page	Page 297 (C-8-2015)
GTIN	4046356342377
Weight per piece (including packing)	314 g
Weight per piece (excluding packing)	230 g
Customs tariff number	85176200
Country of origin	DE

FL SWITCH LM 4TX/1FX - Industrial Ethernet Switch



2989624

<https://www.phoenixcontact.com/us/products/2989624>

Technical data

Dimensions

Width	45 mm
Height	99 mm
Depth	112 mm

Mounting

Mounting type	DIN rail mounting
---------------	-------------------

Interfaces

Ethernet (RJ45)

Connection method	RJ45
Note on the connection method	Auto negotiation and autocrossing
Transmission speed	10/100 Mbps
Transmission physics	Copper
Transmission length	100 m (per segment)
No. of channels	4 (RJ45 ports)

Ethernet FO

Connection method	SC
Transmission speed	100 Mbps (full duplex)
Transmission physics	multi-mode fiberglass
Transmission length	8000 m (fiberglass with F-G 62.5/125 0.7 dB/km F1000)
	6400 m (fiberglass with F-G 50/125 0.7 dB/km F1200)
	3000 m (fiberglass with F-G 62.5/125 2.6 dB/km F600)
	2800 m (fiberglass with F-G 50/125 1.6 dB/km F800)
Wavelength	1300 nm
No. of channels	1 (SC multi-mode)

Serial (RS-232)

Connection method	RS-232-C, 6-pos. MINI-DIN socket (PS/2)
-------------------	---

Product properties

Product type	Switch
Product family	Lean Managed Switch
Type	Block design

Insulation characteristics

Protection class	III (IEC 61140, EN 61140, VDE 0140-1)
------------------	---------------------------------------

Switch functions

Diagnostic functions	1:1-Portmirroring
----------------------	-------------------

FL SWITCH LM 4TX/1FX - Industrial Ethernet Switch



2989624

<https://www.phoenixcontact.com/us/products/2989624>

Basic functions	Store-and-forward switch complies with IEEE 802.3, 2 priority classes according to IEEE 802.1p, TCP/IP protocol, BootP-compatible, port mirroring, integrated web server function, multicast filtering, IGMP snooping, VLAN, Rapid Spanning Tree (RSTP), DHCP server, PTCP filter
PROFINET conformance class	Conformance-Class A
Filter functions	Quality of Service
	VLAN (up to 8 VLANs)
	IGMP Query
	Auto-Query-Port
	Extended Multicast Filtering
Management	Web-based management (HTTP)
	SNMP v1/v2
	Serial interface (V.24)
Redundancy	STP (Spanning Tree Protocol)
	RSTP (Rapid Spanning Tree Protocol)
	FRD (Fast Ring Detection)
	Large Tree Support
Status and diagnostic indicators	LEDs: US1, US2 (power supply), Fail (alarm contact), 2 LEDs per Ethernet port (Link/Activity and Speed)
Supported browsers	Internet Explorer 5.5 or higher

Security functions

Basic functions	Store-and-forward switch complies with IEEE 802.3, 2 priority classes according to IEEE 802.1p, TCP/IP protocol, BootP-compatible, port mirroring, integrated web server function, multicast filtering, IGMP snooping, VLAN, Rapid Spanning Tree (RSTP), DHCP server, PTCP filter
-----------------	---

Electrical properties

Local diagnostics	US Supply voltage Green LED
	Link status Green LED
	Telegrams received Yellow LED
Maximum power dissipation for nominal condition	6 W
Transmission medium	Copper
	FO

Supply

Supply voltage (DC)	24 V DC (redundant)
Supply voltage range	18.5 V DC ... 30.5 V DC
Power supply connection	Via COMBICON, max. conductor cross section 2.5 mm ²
Residual ripple	3.6 V _{pp} (within the permitted voltage range)
Typical current consumption	250 mA (at U _S = 24 V DC)

Connection data

Connection method	Screw connection
Conductor cross section, rigid	0.2 mm ² ... 2.5 mm ²
Conductor cross section, flexible	0.2 mm ² ... 2.5 mm ²

FL SWITCH LM 4TX/1FX - Industrial Ethernet Switch



2989624

<https://www.phoenixcontact.com/us/products/2989624>

Conductor cross section AWG	24 ... 12
Stripping length	7 mm

Environmental and real-life conditions

Ambient conditions

Degree of protection	IP20
Ambient temperature (operation)	-40 °C ... 70 °C
Ambient temperature (storage/transport)	-40 °C ... 85 °C
Permissible humidity (operation)	30 % ... 95 % (non-condensing)
Permissible humidity (storage/transport)	30 % ... 95 % (non-condensing)
Vibration (operation)	in acc. with IEC 60068-2-6: 5g, 150 Hz
Air pressure (operation)	80 kPa ... 108 kPa (2000 m above mean sea level)
Air pressure (storage/transport)	70 kPa ... 108 kPa (3000 m above sea level)

EMC data

Conformance with EMC directives	IEC 61000-6-2 IEC 61000-4-2 (ESD) Criterion B
	IEC 61000-4-3 (immunity to radiated interference) Criterion A
	IEC 61000-4-4 (burst) Criterion B
	IEC 61000-4-5 (surge) Criterion B
	IEC 61000-4-6 (immunity to conducted interference) Criterion A
Noise immunity	EN 61000-6-2:2005
Electromagnetic compatibility	Conformance with EMC Directive 2014/30/EU
Noise emission	EN 61000-6-3/-4

System properties

Functionality

Basic functions	Store-and-forward switch complies with IEEE 802.3, 2 priority classes according to IEEE 802.1p, TCP/IP protocol, BootP-compatible, port mirroring, integrated web server function, multicast filtering, IGMP snooping, VLAN, Rapid Spanning Tree (RSTP), DHCP server, PTCP filter
-----------------	---

System requirements

Supported browsers	Internet Explorer 5.5 or higher
--------------------	---------------------------------

Signaling

Status display	LEDs: US1, US2 (power supply), Fail (alarm contact), 2 LEDs per Ethernet port (Link/Activity and Speed)
----------------	---

FL SWITCH LM 4TX/1FX - Industrial Ethernet Switch



2989624

<https://www.phoenixcontact.com/us/products/2989624>

Classifications

UNSPSC

UNSPSC 21.0	43222612
-------------	----------

Environmental product compliance

EU RoHS	
Fulfills EU RoHS substance requirements	Yes
Exemption	7(a), 7(c)-I
China RoHS	
Environment friendly use period (EFUP)	EFUP-50
	An article-related China RoHS declaration table can be found in the download area for the respective article under "Manufacturer declaration". For all articles with EFUP-E, no China RoHS declaration table issued and required.
EU REACH SVHC	
REACH candidate substance (CAS No.)	No substance above 0.1 wt%

FL SWITCH LM 4TX/1FX - Industrial Ethernet Switch



2989624

<https://www.phoenixcontact.com/us/products/2989624>

Accessories

COM CAB MINI DIN - Connecting cable

2400127

<https://www.phoenixcontact.com/us/products/2400127>

Connecting cable, for connecting the controller to a PC (RS-232) for PC WORX with flow control, 3 m in length



FL CAT5 PATCH 1,0 - Patch cable

2832276

<https://www.phoenixcontact.com/us/products/2832276>

Patch cable, CAT5, assembled, 1 m



FL SWITCH LM 4TX/1FX - Industrial Ethernet Switch



2989624

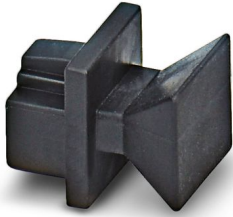
<https://www.phoenixcontact.com/us/products/2989624>

FL RJ45 PROTECT CAP - Dust protection

2832991

<https://www.phoenixcontact.com/us/products/2832991>

Dust protection caps for RJ45 socket

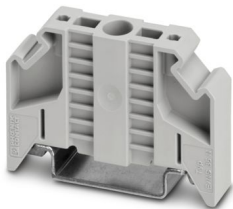


E/NS 35 N - End bracket

0800886

<https://www.phoenixcontact.com/us/products/0800886>

End clamp, width: 9.5 mm, color: gray



FL SWITCH LM 4TX/1FX - Industrial Ethernet Switch



2989624

<https://www.phoenixcontact.com/us/products/2989624>

FL SNMP OPC SERVER V3 - Driver and interface software

2701139

<https://www.phoenixcontact.com/us/products/2701139>



SNMP-OPC server, German and English, for monitoring and configuration of SNMP-capable equipment in HMI and SCADA systems

FL SNMP OPC AGENT V3 - Driver and interface software

2701136

<https://www.phoenixcontact.com/us/products/2701136>



SNMP-OPC agent, German and English, for integrating OPC-based automation solutions in company-wide network management systems

FL SWITCH LM 4TX/1FX - Industrial Ethernet Switch



2989624

<https://www.phoenixcontact.com/us/products/2989624>

IPASSIGN - Software

2701094

<https://www.phoenixcontact.com/us/products/2701094>



IPAssign is an easy to use tool for setting the IP address of devices which rely on BOOTP. No installation or administrative rights are required to use IPAssign.

This product is free and only available from the "Downloads" tab.

FL DIN RA - DIN rail adapter

2891053

<https://www.phoenixcontact.com/us/products/2891053>

The FL DIN RA is installed in a standard, 19-inch rack (EIA-310-D, IEC 60297-3-100) to allow DIN rail mounted equipment to be rack mounted.



Phoenix Contact 2024 © - all rights reserved
<https://www.phoenixcontact.com>

Phoenix Contact USA
586 Fulling Mill Road
Middletown, PA 17057, United States
(+717) 944-1300
info@phoenixcon.com